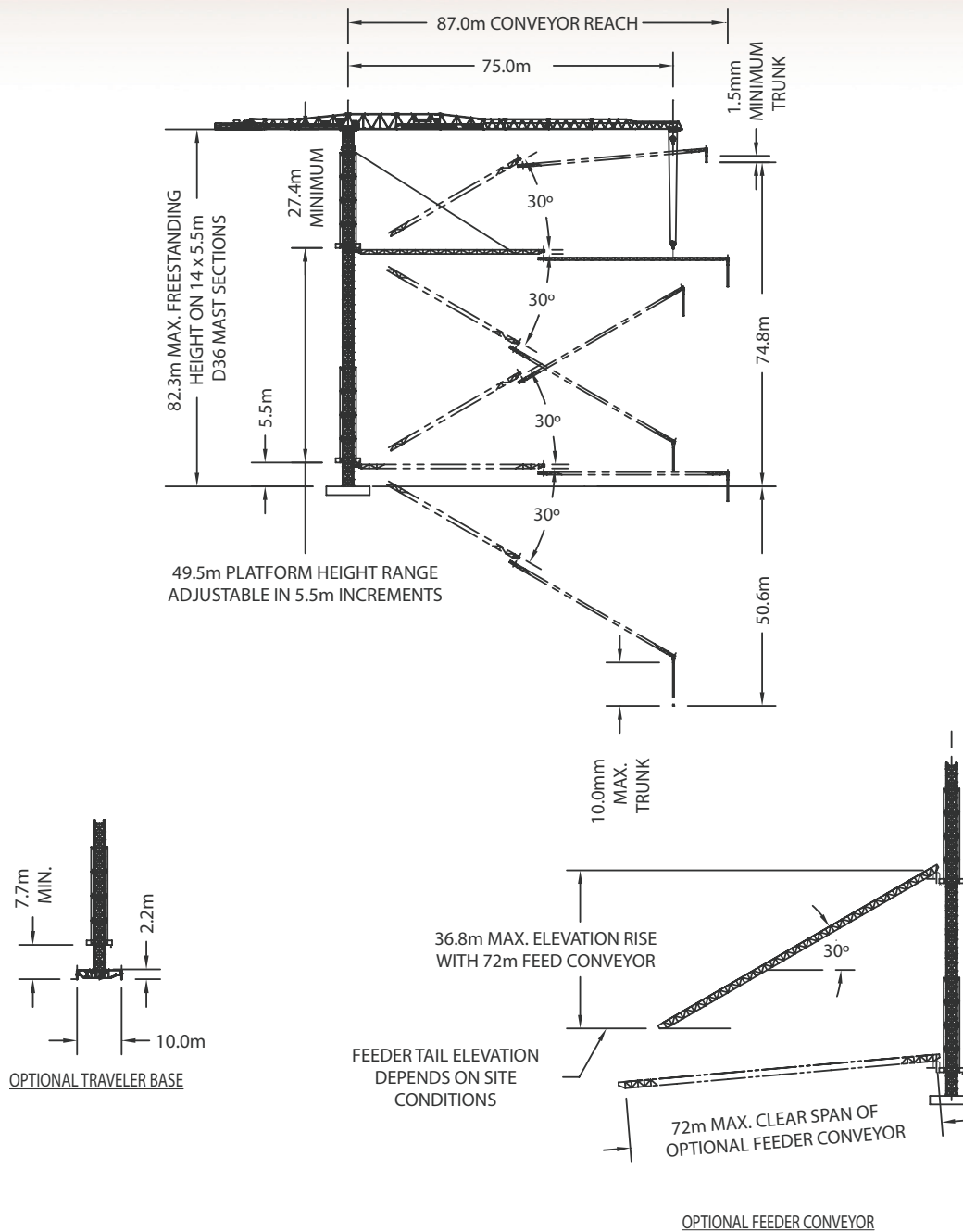
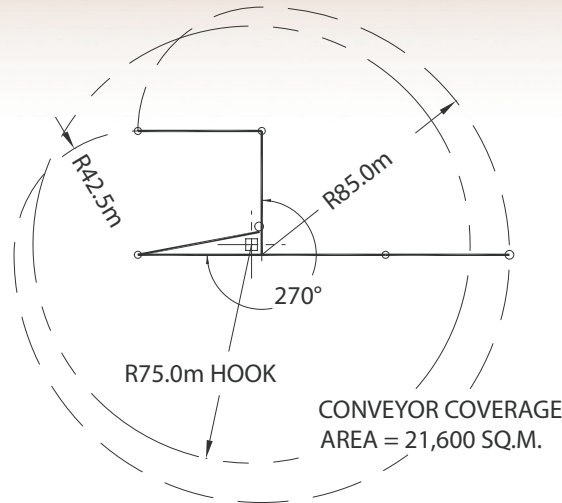


TOWER PLACER TLC-87-24-75



SUBJECT TO MODIFICATIONS

TOWER PLACER TLC-87-24-75



PLAN OF CONVEYOR COVERAGE

	FIXED BASE
conveyor length	85M (2 x 42.5M)
conveyor belt width	610MM
conveyor capacity	350 cu.M/hr at 0° incline (actual capacity depends on inclined angle and material properties)
conveyor inclined angle	+30° to -30°
conveyor inner rotation	270°
conveyor outer rotation	360°
max aggregate size	150 MM
movable platform on crane mast	yes
tower crane	Linden Comasa model 21LC750-24T
max hook capacity	24T
hook radius	75M
base	fixed or traveler
max tower sections	(14) 2.5M X 2.5M X 5.5M mast sections
max height under hook with fixed base	78.8M
max height under hook with traveling base	80.9M
additional height possible	with use of tower tie-backs

SUBJECT TO MODIFICATIONS